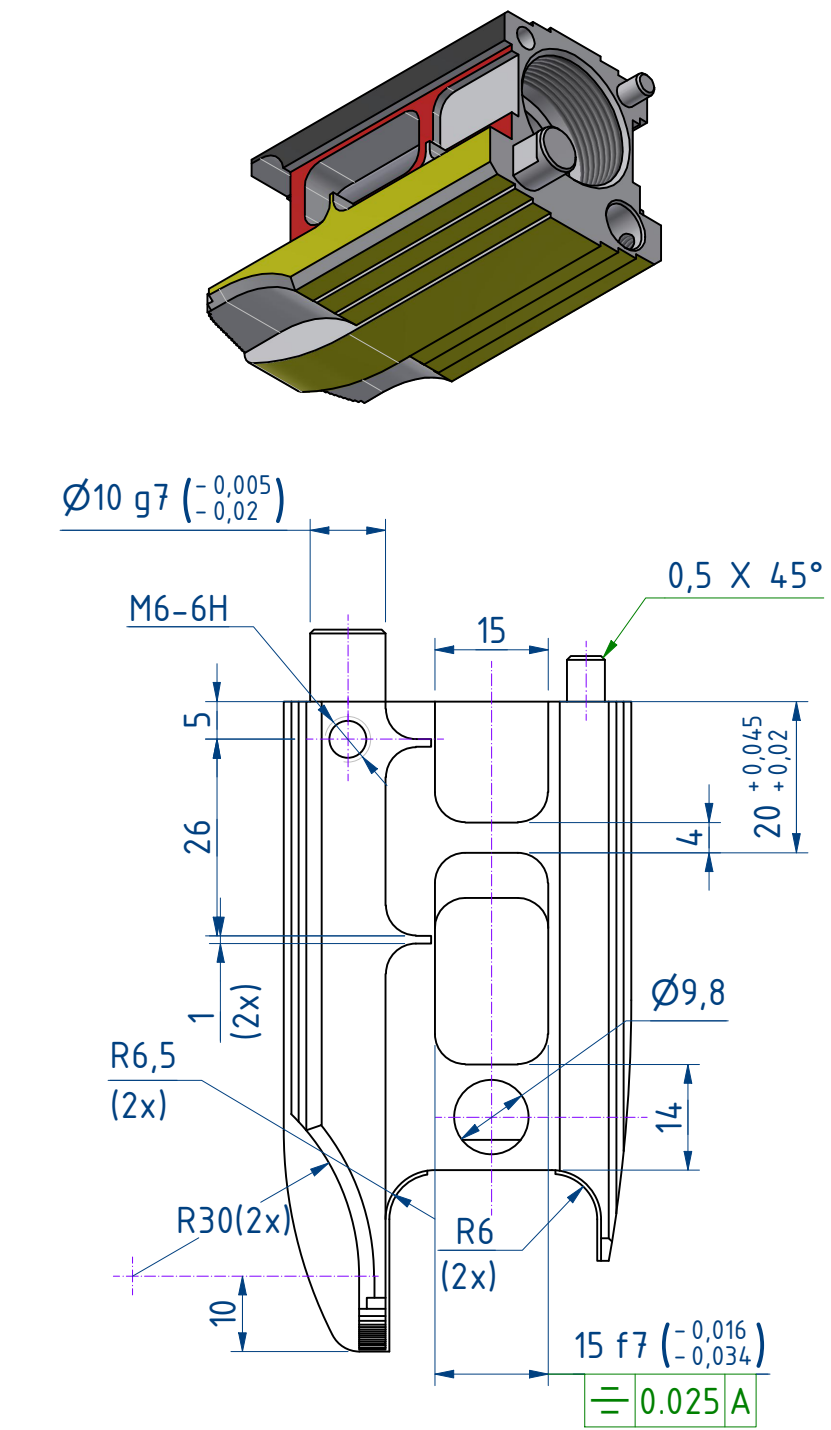
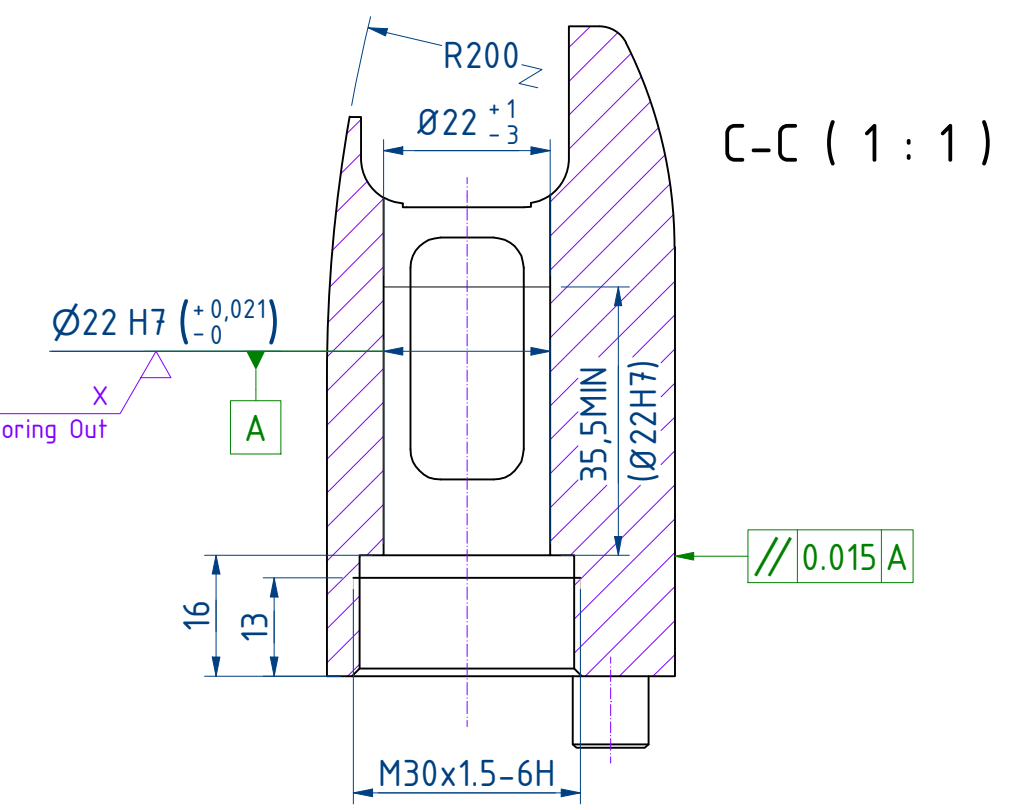
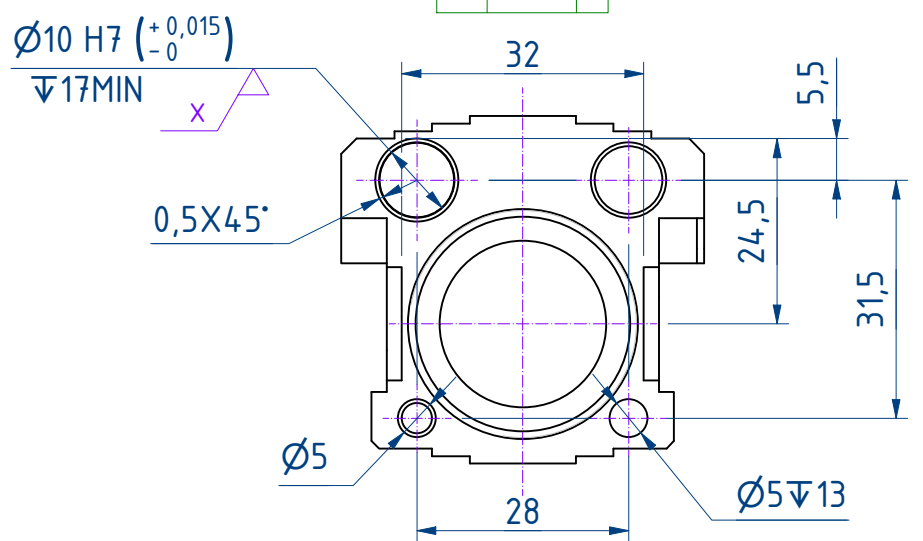
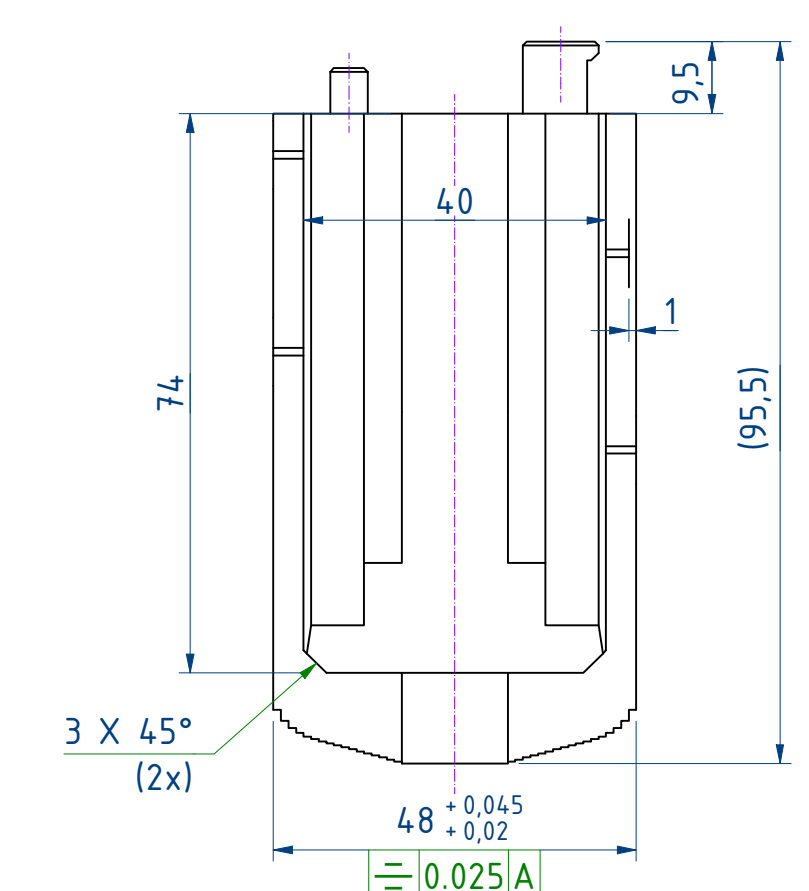
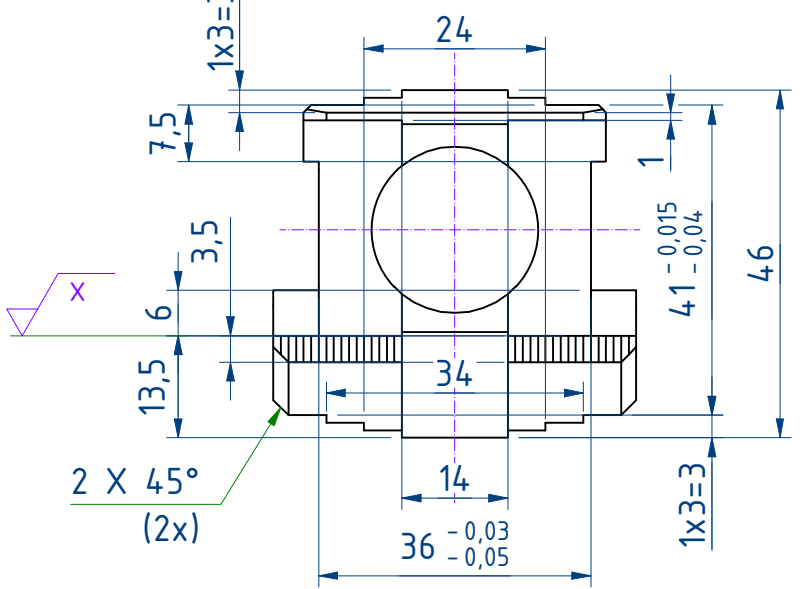
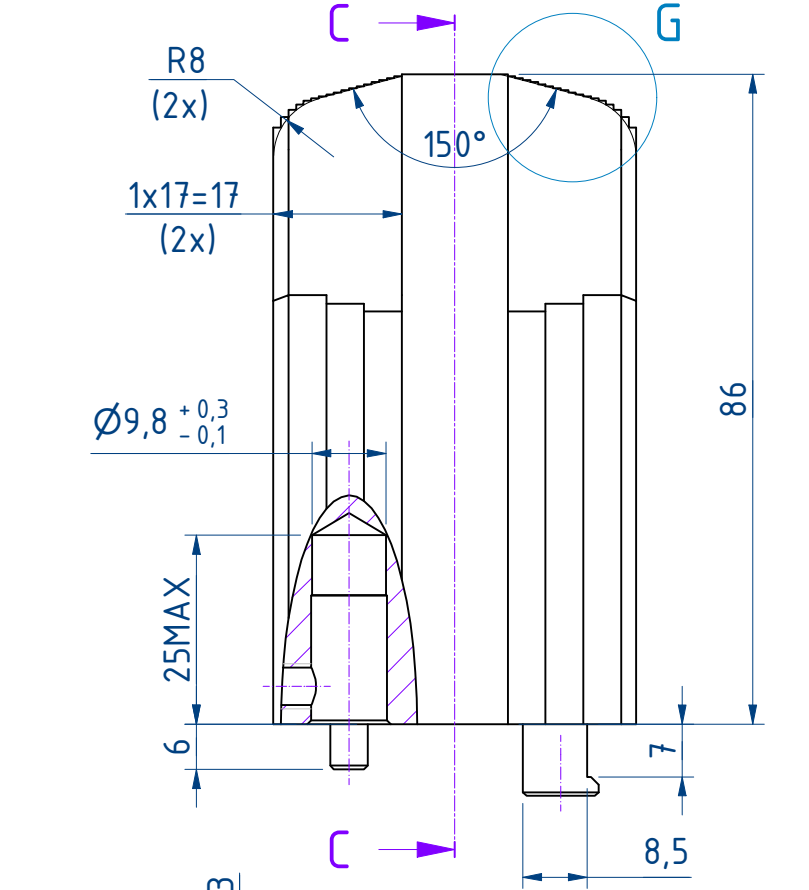
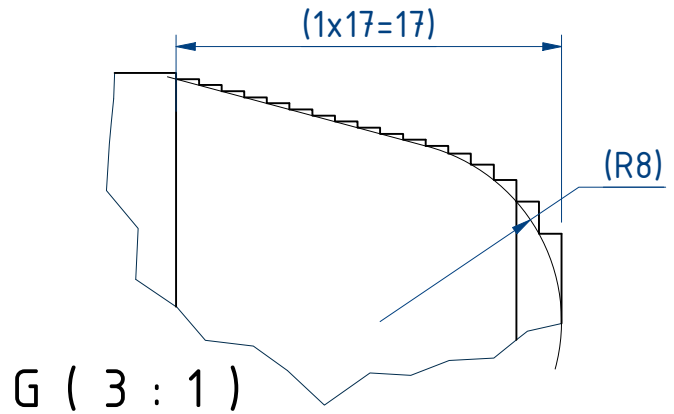
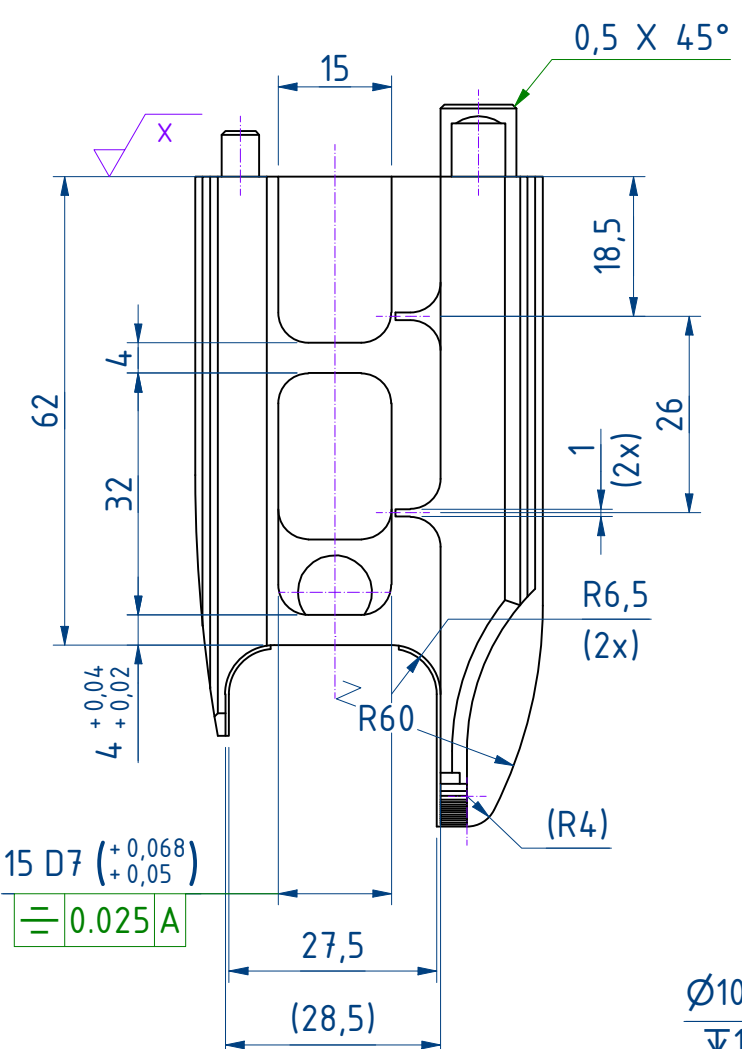
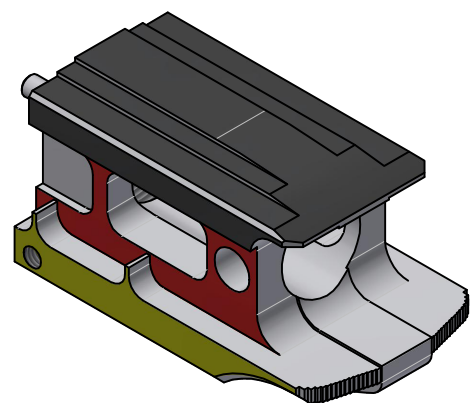
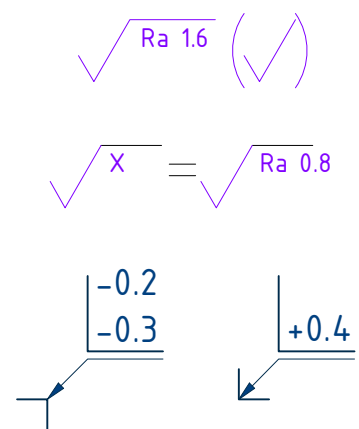
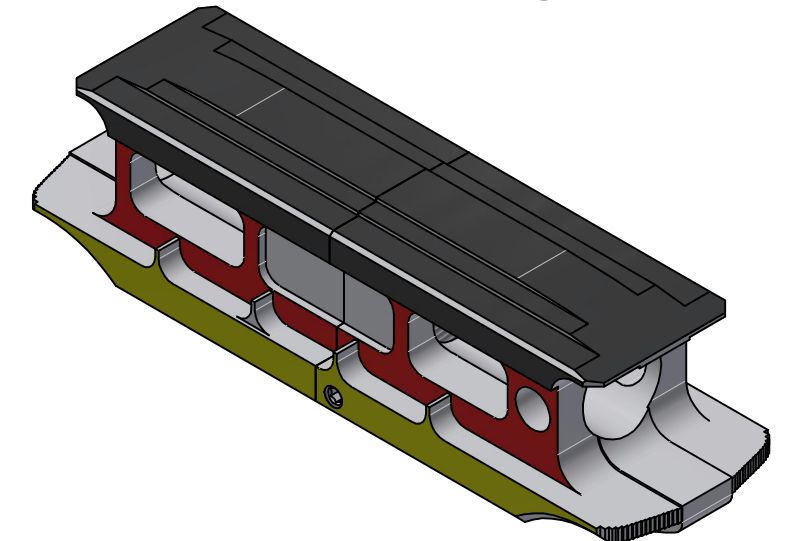
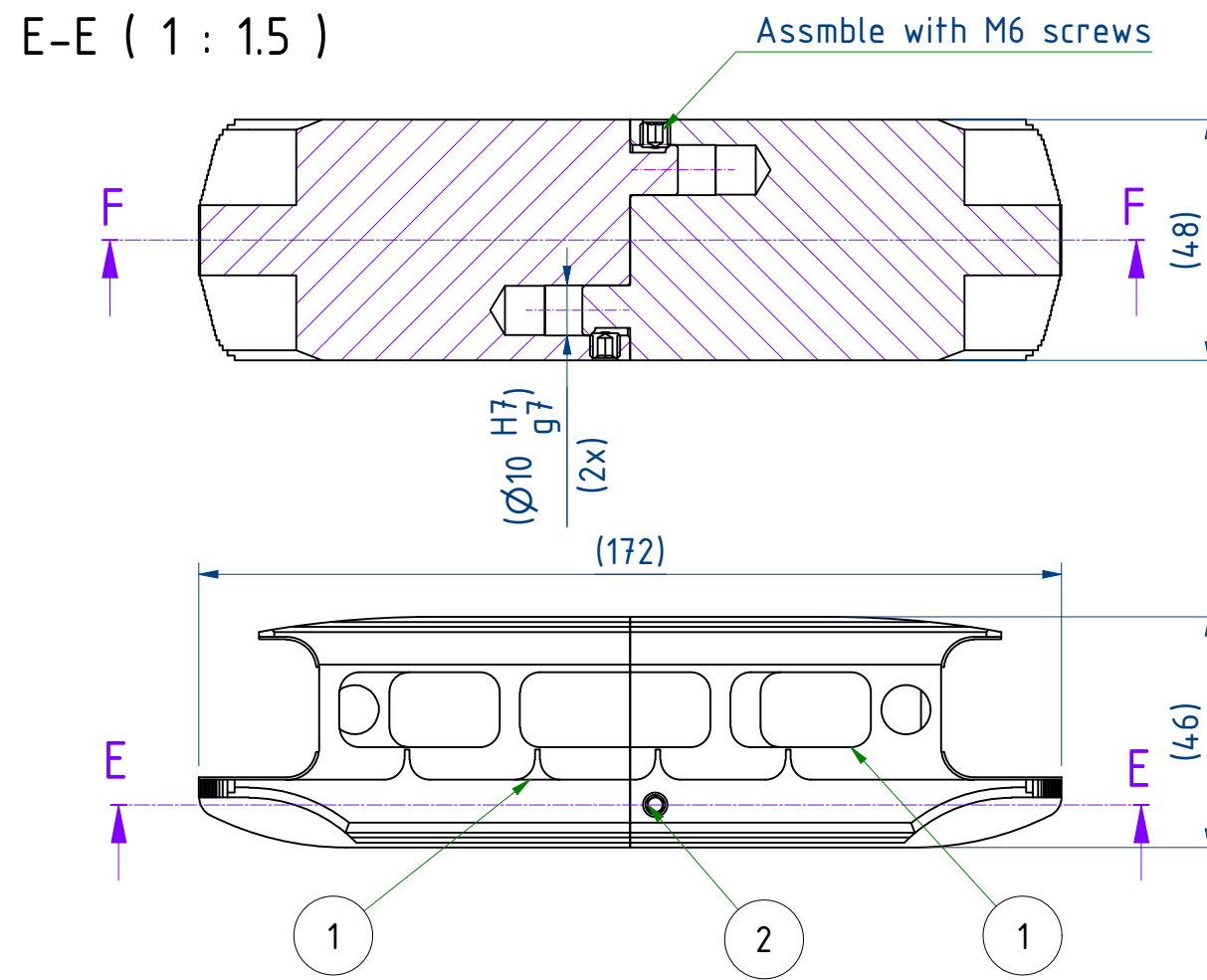
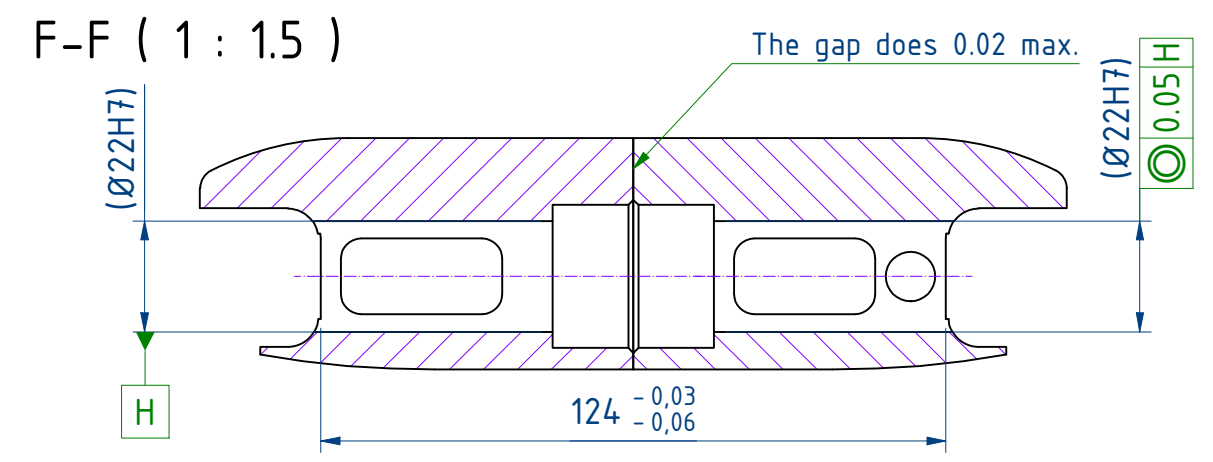


# PART ( SCALE 1 : 1 )



General Tolerance +/-0.04  
Form and Positional Tolerances acc to DIN ISO 1101  
Depth of hole and thread: 0/+2 mm  
Depth of bore: 0/+0.5 mm  
Radius: +/-0.2mm  
Angle: +/-0.5°  
Unspecified Round R4.0  
Unspecified Chamfer 1x45°

# ASSEMBLY ( SCALE 1 : 1.5 )



ISO E

2	2	M6x6 Screw					
1	2	WSC2022_TP07_M2_EN	C45E 1.1191				
NO.	QTY.	PART NAME	MATERIAL				
<div> <b>worldskills</b> COMPETITION 2022 SPECIAL EDITION Test Project for WorldSkills Competition in Stuttgart, Germany 2022 Copyright 2022 © WorldSkills International All Rights Reserved</div>			Skill: CNC MILLING 07				
			Design by: MINGLIANG LIU				
			Last Update: 30.08.2022		Scale: 1 : 1	Paper: A2	Page: 1/1
			Drawing Number: WSC2022_TP07_M2_EN			Rev: 3	
			Description: MODULE 2			Projection: 	
						C45E 1.1191 ( RAW SIZE 100x50x50 QTY 2 )	