

A

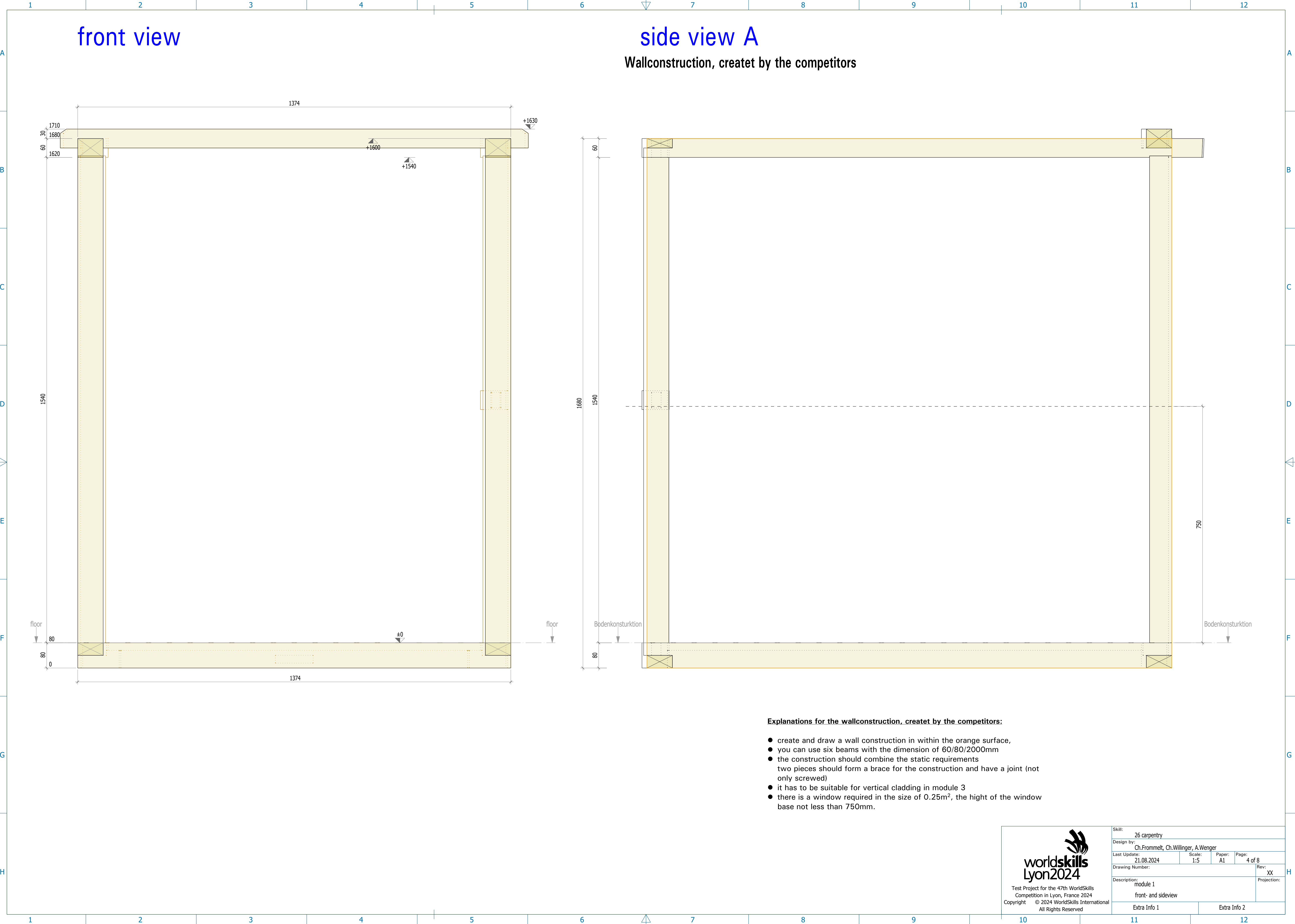


A



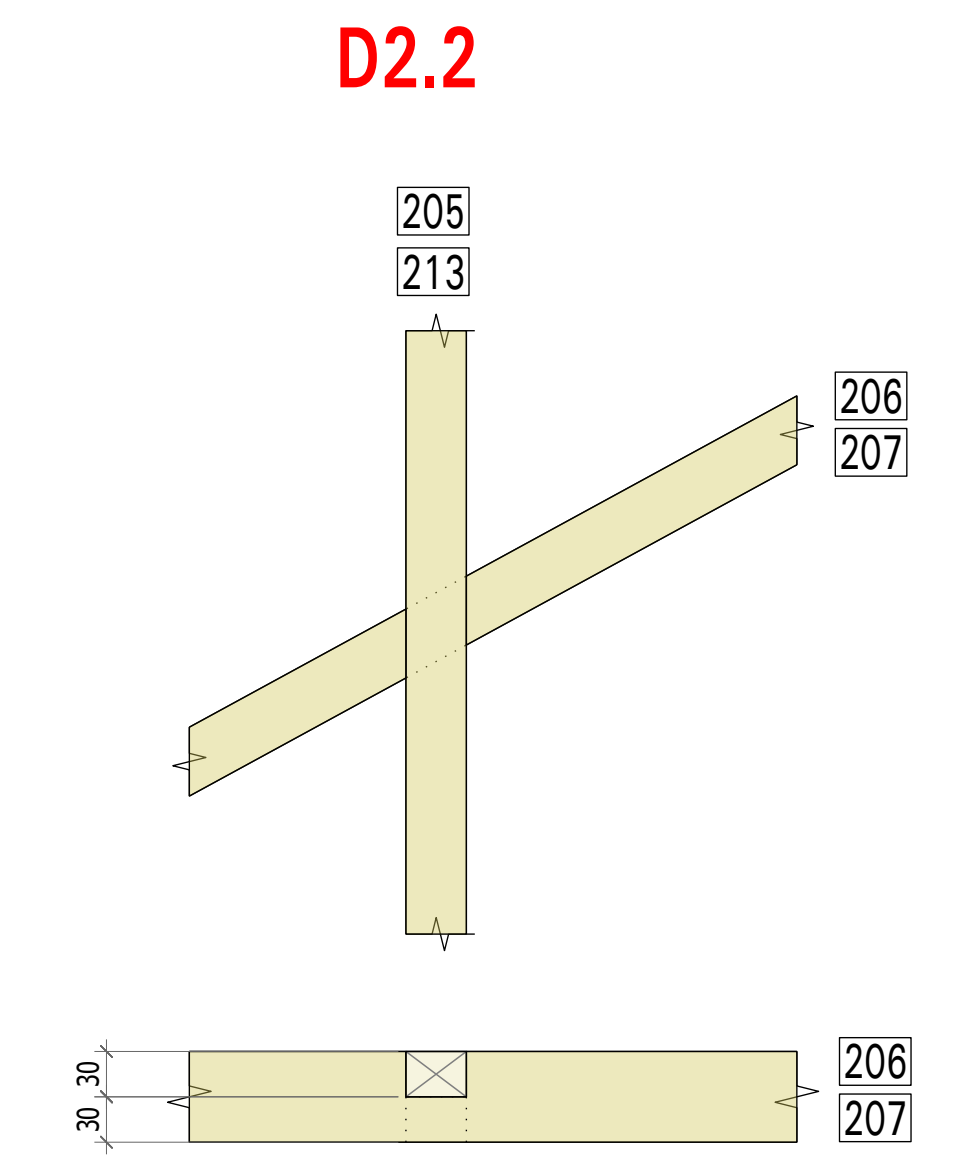
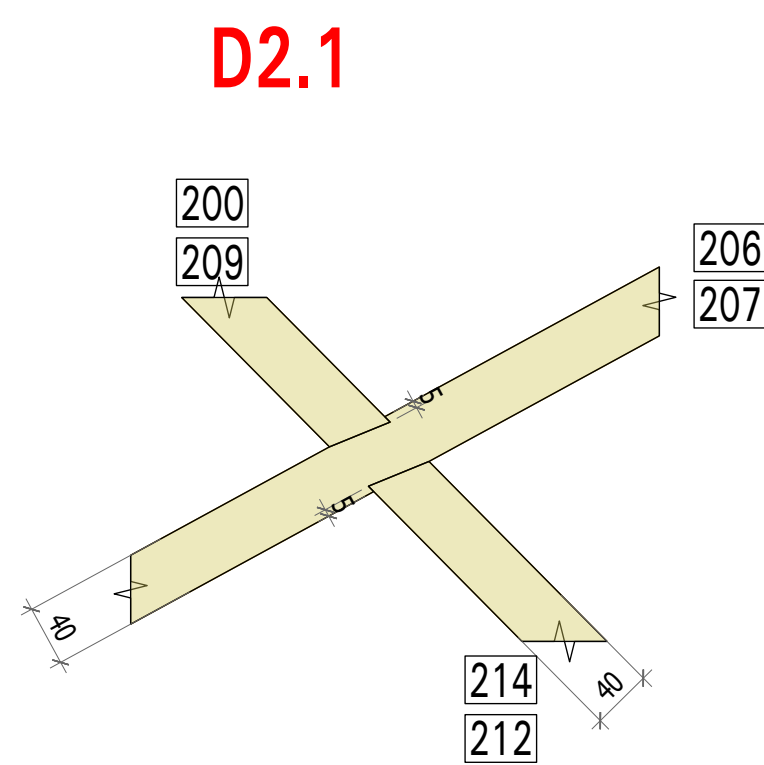
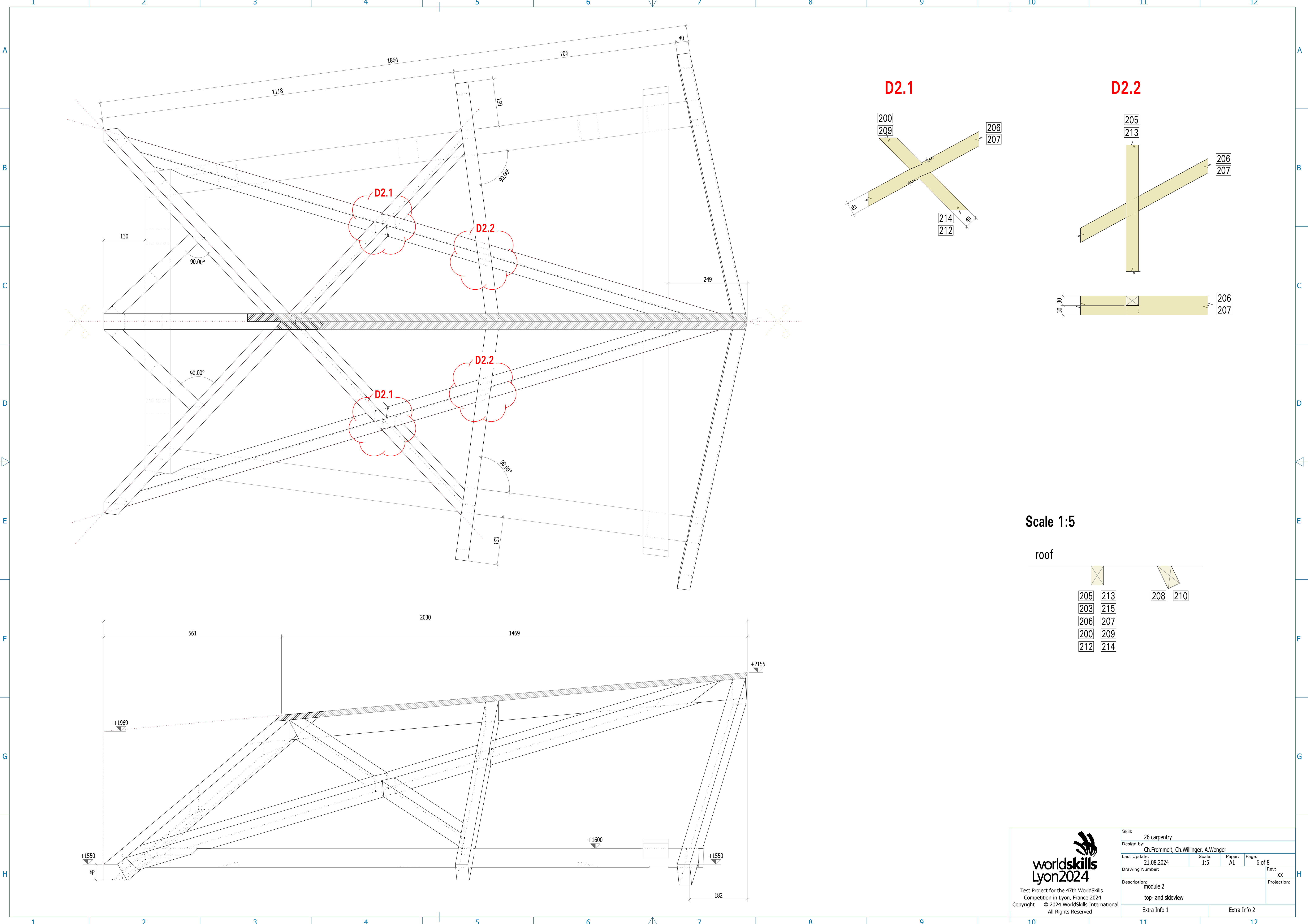
E



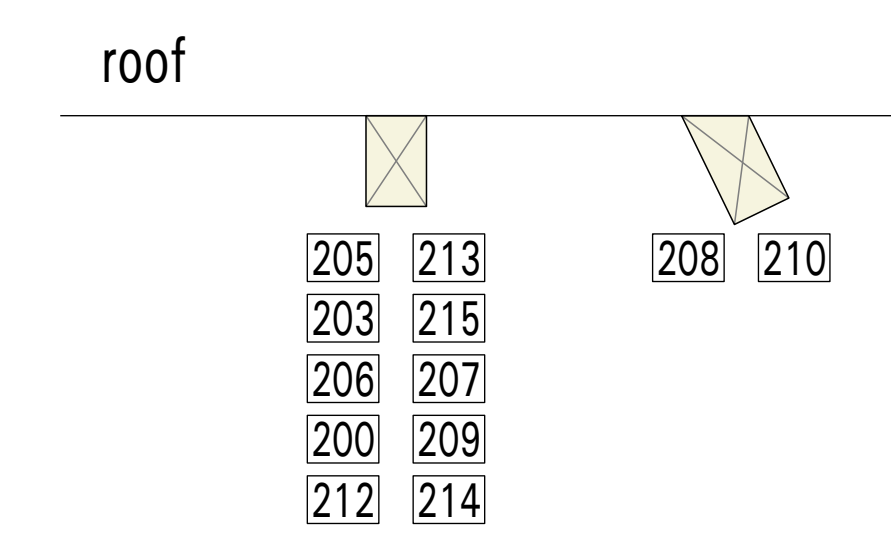


Explanations for the wallconstruction, createt by the competitors:


- create and draw a wall construction in within the orange surface,
- you can use six beams with the dimension of 60/80/2000mm
- the construction should combine the static requirements
 - two pieces should form a brace for the construction and have a joint (not only screwed)
- it has to be suitable for vertical cladding in module 3
- there is a window required in the size of 0.25m², the hight of the window base not less than 750mm.



Scale 1:5







Test Project for the 47th WorldSkills
Competition in Lyon, France 2024

Copyright © 2024 WorldSkills International
All Rights Reserved

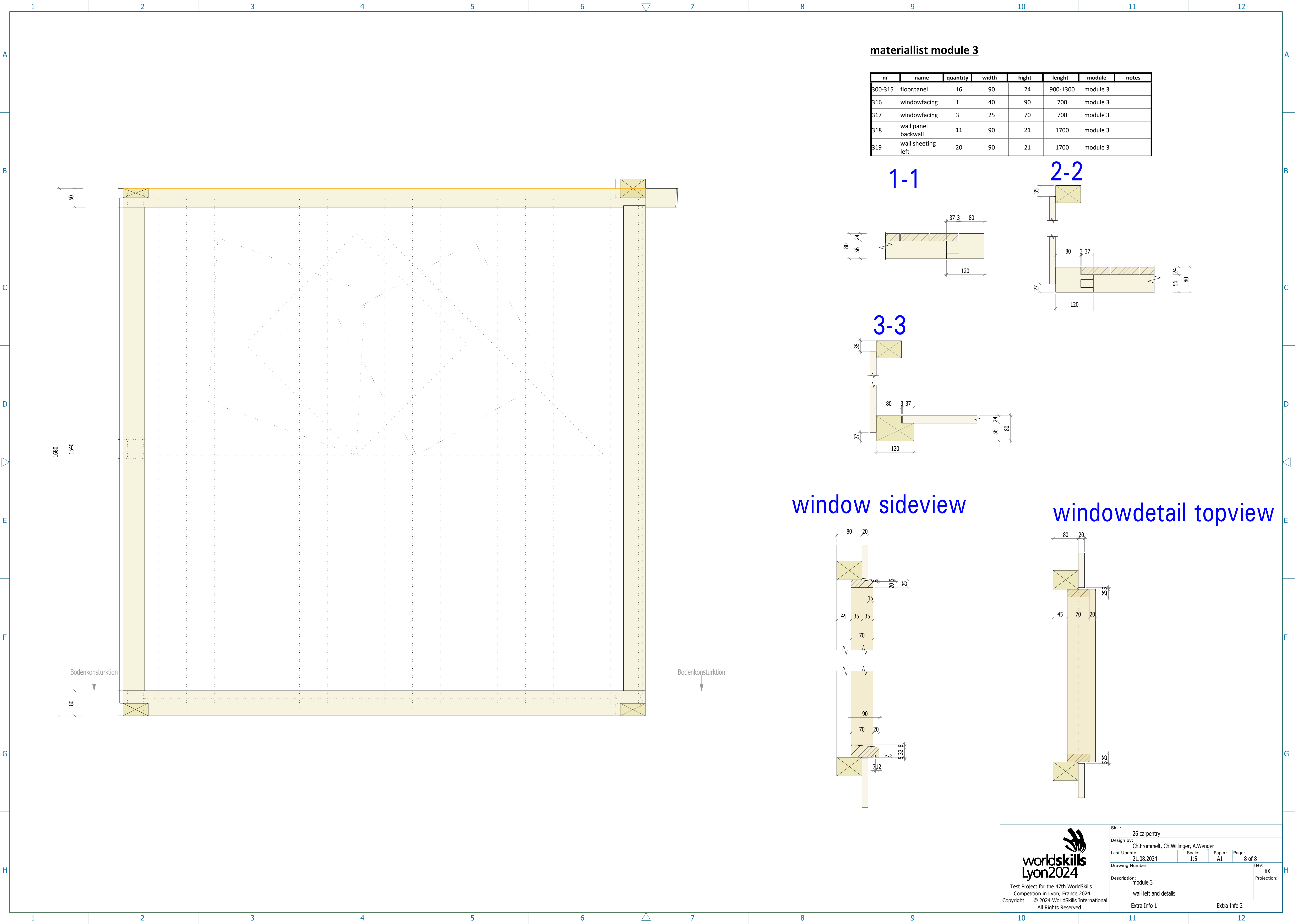
Skill: 26 carpentry

Design by: Ch.Frommelt, Ch.Willinger, A.Wenger

| | | | |
|----------------------------|---------------|--------------|-----------------|
| Last Update: 21.08.2024 | Scale: 1:5 | Paper: A1 | Page: 5 of 8 |
|----------------------------|---------------|--------------|-----------------|

| | |
|--|-------------|
| Drawing Number: | Rev: XX |
| Description: module 2 elevation and materiallist | Projection: |

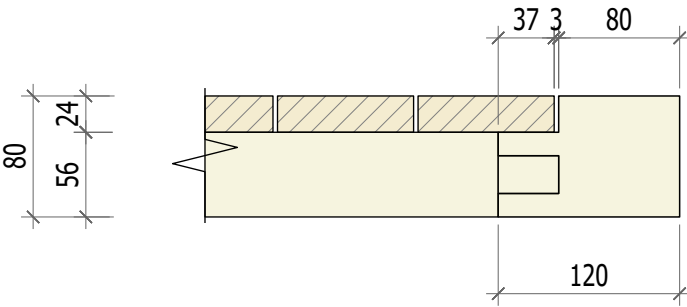
| | |
|--------------|--------------|
| Extra Info 1 | Extra Info 2 |
|--------------|--------------|



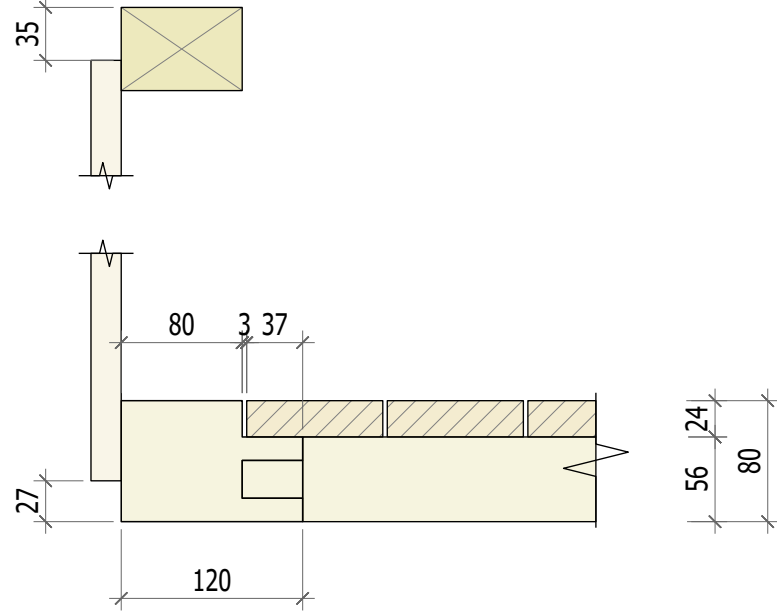
materialist module 3

| nr | name | quantity | width | hight | lenght | module | notes |
|---------|------------------------|----------|-------|-------|----------|----------|-------|
| 300-315 | floorpanel | 16 | 90 | 24 | 900-1300 | module 3 | |
| 316 | windowfacing | 1 | 40 | 90 | 700 | module 3 | |
| 317 | windowfacing | 3 | 25 | 70 | 700 | module 3 | |
| 318 | wall panel backwall | 11 | 90 | 21 | 1700 | module 3 | |
| 319 | wall sheeting left | 20 | 90 | 21 | 1700 | module 3 | |

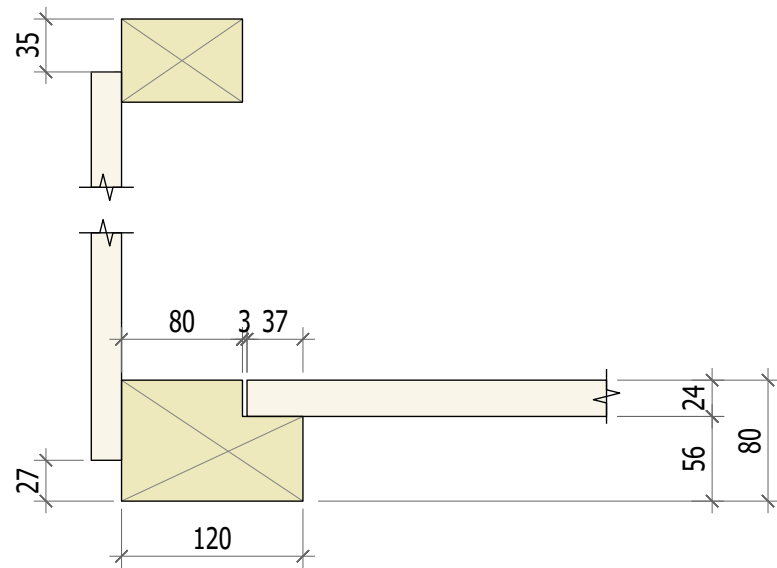
1-1



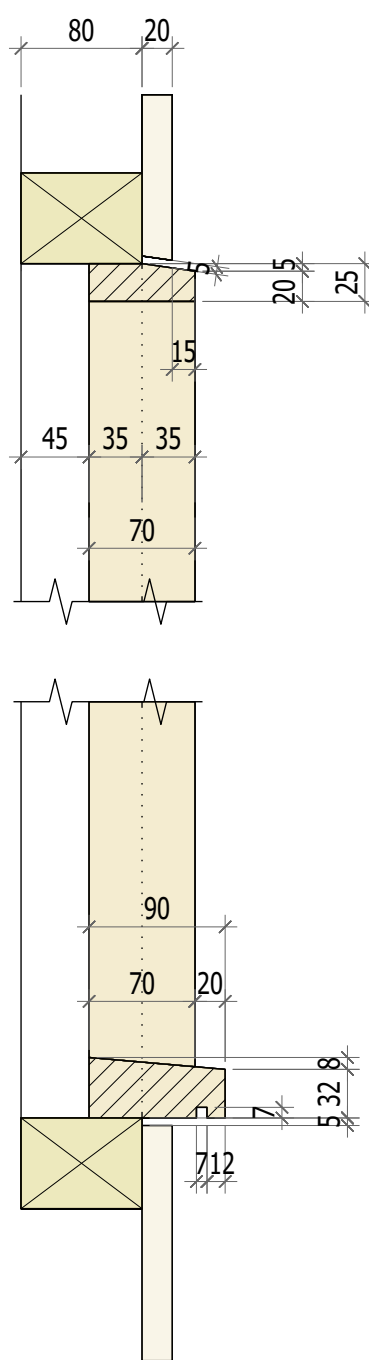
2-2



3-3



window sideview



windowdetail topview

